


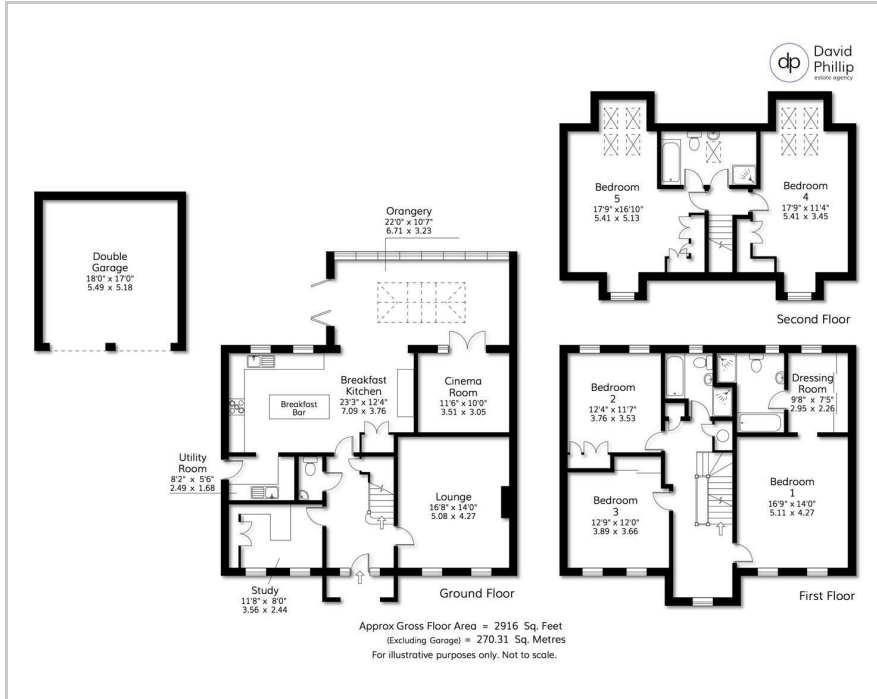


5 Woodsley Drive, Leeds, LS16 8FS

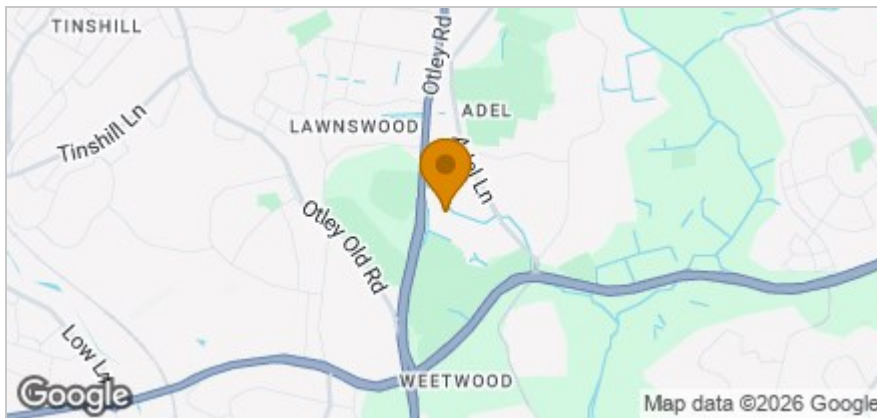
Price Guide £1,100,000

 5  3  4  B

## Floor Plan



## Area Map



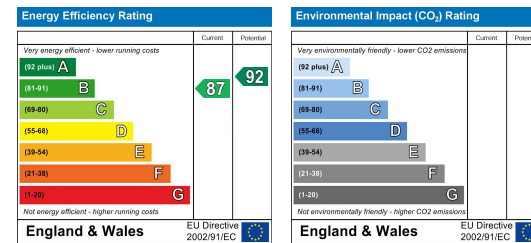
## Accommodation

- An Exceptional Five Bedroom Detached Family House
- Three Bathrooms with Luxury Modern Fixtures and White Suites
- Large Open-Plan Kitchen/Diner with Integrated Appliances and Garden Access
- Spacious Reception Spaces Perfect for Family Life and Entertaining
- Private Landscaped Corner Garden with Excellent Outdoor Space
- Double Detached Garage and Ample Driveway Parking
- Quiet Leafy Cul-de-Sac in One of North Leeds Most Desirable Locations
- Energy Performance Certificate (EPC) Rating B / Freehold, Leeds City Council Tax Band G

## Viewing

Please contact our David Phillip Estate Agents Office on 01134 676 400 if you wish to arrange a viewing appointment for this property or require further information.

## Energy Efficiency Graph



These particulars, whilst believed to be accurate are set out as a general outline only for guidance and do not constitute any part of an offer or contract. Intending purchasers should not rely on them as statements of representation of fact, but must satisfy themselves by inspection or otherwise as to their accuracy. No person in this firm's employment has the authority to make or give any representation or warranty in respect of the property.